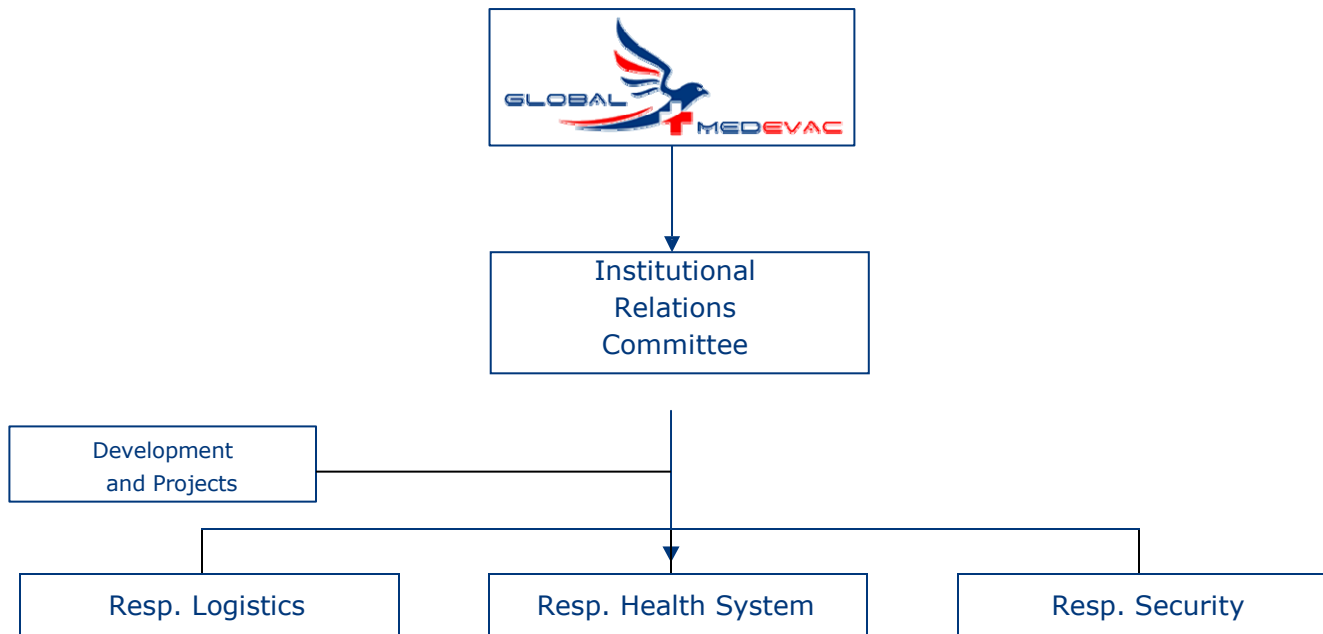


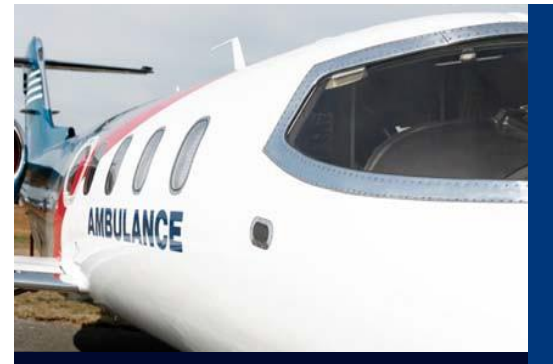
Areas of expertise





SAFETY SECURITY PROGRAM FOR THE EVACUATION OF THE WOUNDED FROM LIBIA

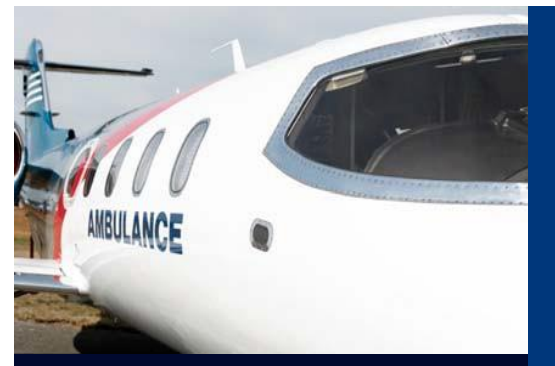
1. Assessment required evacuation and medical intervention
EVALUATION ACTIVITY (preliminary)
 - a) study and organizational assessment
 - b) study and technical-scientific evaluation
 - c) study and contractual economic evaluations
 - d) start preliminary activities





SAFETY SECURITY PROGRAM FOR THE EVACUATION OF THE WOUNDED FROM IRAQ

1. Assessment required evacuation and medical intervention
EVALUATION ACTIVITY (preliminary)
 - a) study and organizational assesment
 - b) study and technical-scientific evaluation
 - c) study and contractual economic evaluations
 - d) start preliminary activities





SAFETY SECURITY PROGRAM FOR THE EVACUATION OF THE WOUNDED FROM DOMINICAN REP. CONGO

1. Assessment required evacuation and medical intervention
EVALUATION ACTIVITY (preliminary)
 - a) study and organizational assessment
 - b) study and technical-scientific evaluation
 - c) study and contractual economic evaluations
 - d) start preliminary activities



TRIAGE CASES

- Technical and Scientific Study
- Start medical study phase of remote cases
- Start triage on site (if requested and if possible)
- Activity management personnel and infrastructure safety on site (if required)
- Formulation and implementation of action plan
- Support for evacuation, technical remote control
- Injured / patients reception: formulation of operational plan
- Hospitalization and actions required: identification of structures and professionals based on skills
- Medical Assets supervision and formulation of health reports (pertaining to the agreements)
- Stabilization and recovery period at external residence: recovery and stabilization activities for wounded



EVACUATION AREA

Sanitary Airline with Single or Multi-Stretchers.

Health situation assessment

Wounded Stabilization to transport (remote controls)

Departure and Landing in the established city

Transport Organization in Ambulance



HOSPITALIZATION

- At trusted clinics
- Admission Organization at a suitable structure
- Organization of intervention team
- Acceptance of injured / patients and medical records from medical personnel responsible for patient management
- First triage and operational protocol confirm
- Trauma / orthopedic / surgical / medical activities
- Daily checks and report formulation according to models
- Intelligence operation on the risks of people, the structure, and perimeter security facility assets (if required)

PATIENT MANAGEMENT:

- a) During hospitalization:
 - Medical supervision of clinical evolution activities
- b) At release:
 - Provision of an accommodation facility
 - Assistance post-hospitalization
 - Patient stabilization from the departure



ORGANIZATION

CLINIC

- Contacts and commercial management
- Preliminary organization
- Contracts
- administration
- Management and Control)
- Medical air transport

SECURITY

- Intelligence
- Travel security
- Stocks and armed guards



TRUSTED CLINICS

characteristics according wounded patient

available for different cases

following the protocols and procedures established in the process of triage
(coordinated and controlled work)

TRUSTED STAFF

chosen according to the characteristics and evaluations

agreement with professional administrator